



Co-funded by
the European Union

www.esgdiagnostic.eu

INFO DAY

29/03/2024 - 17.00 CET

Funded by the European Union. Views and opinions expressed are however those of the author(s) only and do not necessarily reflect those of the European Union or the European Education and Culture Executive Agency (EACEA). Neither the European Union nor EACEA can be held responsible for them.



ESG

DIAGNOSTIC



Today's Agenda

01

Presentation of the project

02

Presentation of the leading and partner organizations

03

Presentation of the project results

04

Presentation of results sources

05

Q & A



ESG
DIAGNOSTIC

INFO DAY



Co-funded by
the European Union

OPENING

17.00 - 17.15 CET

- Presentation of the project ESG Diagnostic
- Presentation of partner and leading organizations

PRESENTATION OF PROJECT RESULTS

17.15 - 17.40 CET

- Kick-off meeting in Stockholm, Sweden
- Experts Workshop in ESG in Nicosia, Cyprus
- Focus Group Report including Best Practises Portfolio
- Transnational Workshop for Professionals in Athens, Greece
- E-guide Book

PRESENTATION OF RESULTS SOURCES

17.40 - 17.45 CET

- Social media and website of the project
- Evaluation questionnaire

Q & A



DATAPHORIA



omni a
research | innovations | solutions



Co-funded by
the European Union



ESG DIAGNOSTIC

2022-2-SE01-KA210-VET-00009419

- **Full title:** Developing Digital Training tools to establish Environmental and Social Governance in Organizations
- **Type of project:** KA210-VET - Small-scale partnerships in vocational education and training
- **Duration:** 01/03/2023 - 01/05/2024
- **Partner organizations:** IRIS Sustainable Development, OMNIA, Dataphoria
- **Aim and purpose:** The project aims to contribute to the acceleration of the organizations' sustainability transition and their training on how to measure and improve their ESG performance by inserting digital tools to sustainability methods.



TARGET GROUPS

DIRECT GROUPS

Companies who wish to enhance their knowledge on ESG metrics and digital tools

Professionals / Managers of companies which report their ESG progress

INDIRECT GROUPS

Local Authorities

Universities and colleges

VET Centres and Institutions

Trainers, consultants and technicians

Business representatives, decision makers, governmental business entities



Co-funded by
the European Union



ABOUT IRIS

IRIS is a Swedish NGO and a **UN SDSN Youth Member**, founded by a group of people with a common goal; to build greener, healthier, and more sustainable communities.

We provide **non-formal** and **intercultural learning experiences** in order to enhance sustainable development and encourage young people to become active and transformational agents of their communities.





Co-funded by
the European Union



ESG
DIAGNOSTIC



Our Vision

We empower the next generation through environmental education, inspiring youths worldwide to become passionate stewards of our planet's future.



Our Mission

Through education, advocacy, and action, we aim to cultivate a generation of leaders who are passionate about fostering sustainability, promoting responsible stewardship, and championing a prosperous future for all.





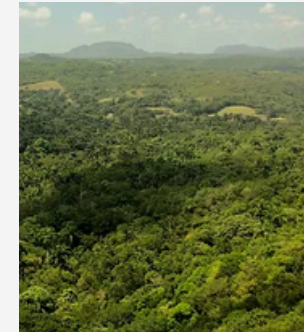
Co-funded by
the European Union



ESG
DIAGNOSTIC

OUR PROJECTS

- ACT RESPONSIBLE
- STOP ECOANXIETY
- INNER CITY OUTER LIFE
- WOMEN4CLIMATE
- TECH4US
- CSR CONSULTING
- PUBLICATIONS - WRITERS TEAM



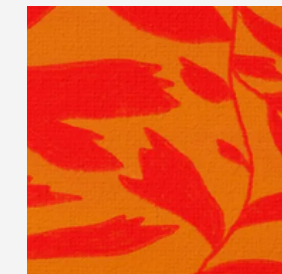
Eco-Anxiety Reports

Read More



Digital Talks

Read more



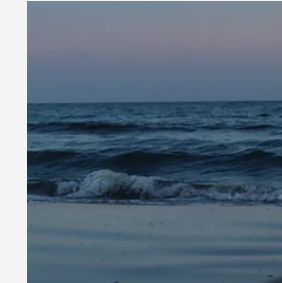
We the Women

Read more



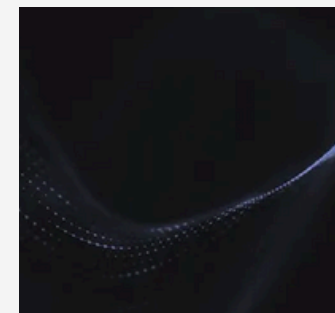
Art Creations

Read More



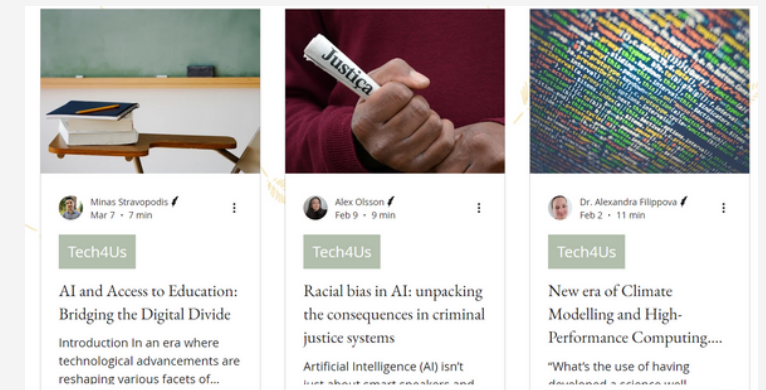
Anxiety Elimination
Sessions

Read More



Tech4Us Reports

Learn More





Co-funded by
the European Union



ESG
DIAGNOSTIC

KA1
KA1 Action YOUTH EXCHANGE DARE to C.A.R.E Partner
KA1 Action TRAINING COURSE Media Literate: The Youth Worker of Tomorrow Partner
KA1 Action TRAINING COURSE YOU(TH) RIGHT Partner
KA1 Action MOBILITY YOUTH WORKERS Transformative youth leadership Partner
KA152-YOU - Mobility of young people Culture flows in (E)U Partner

KA2
KA210-ADU-Small scale partnerships in adult education SLOW FASHION FOR THE FASHION INDUSTRY Project Coordinator
KA220-YOU- Cooperation partnerships in youth Slow Food Movement (The Way We It Does Matter) Partner
KA210-VET-Small Scale Partnerships in Vocational Education and Training ESG Diagnostic Project Coordinator
KAKA220-YOU - Cooperation partnerships in youth GenAI Partner
KA220-YOU - Cooperation partnerships in youth Green Changemakers Partner
KA220-VET - Cooperation partnerships in vocational education and training AI4Agri Partner

KA3
KA3 Action SOLIDinEDU Fostering Solidarity Through Education Partner



Our EU-funded projects



Contact Us

- **Facebook:** <https://www.facebook.com/irissustainabledevelopment>
- **LinkedIn:** <https://www.linkedin.com/company/iris-sustainable-development>
- **Instagram:** [iris_sustainable_development](https://www.instagram.com/iris_sustainable_development)



www.irissd.org



info@irissd.org



Kungsbro Strand 29, 112 26
Normalm, Sweden



Co-funded by
the European Union



ESG
DIAGNOSTIC

ABOUT DATAPHORIA

EMBED SUSTAINABILITY IN YOUR CORE

Dataphoria offers an Analytics-as-a-Service platform dedicated to **facilitating sustainability transition for companies and cities**. Our core mission is to measure, optimize, and communicate sustainability efforts through personalized ESG (Environmental, Social, and Governance) Analytics.

We have built cutting-edge technology blended with ESG expertise, creating a dedicated suite for strategy, data integration, analysis, visualization and reporting, all focused on sustainability.

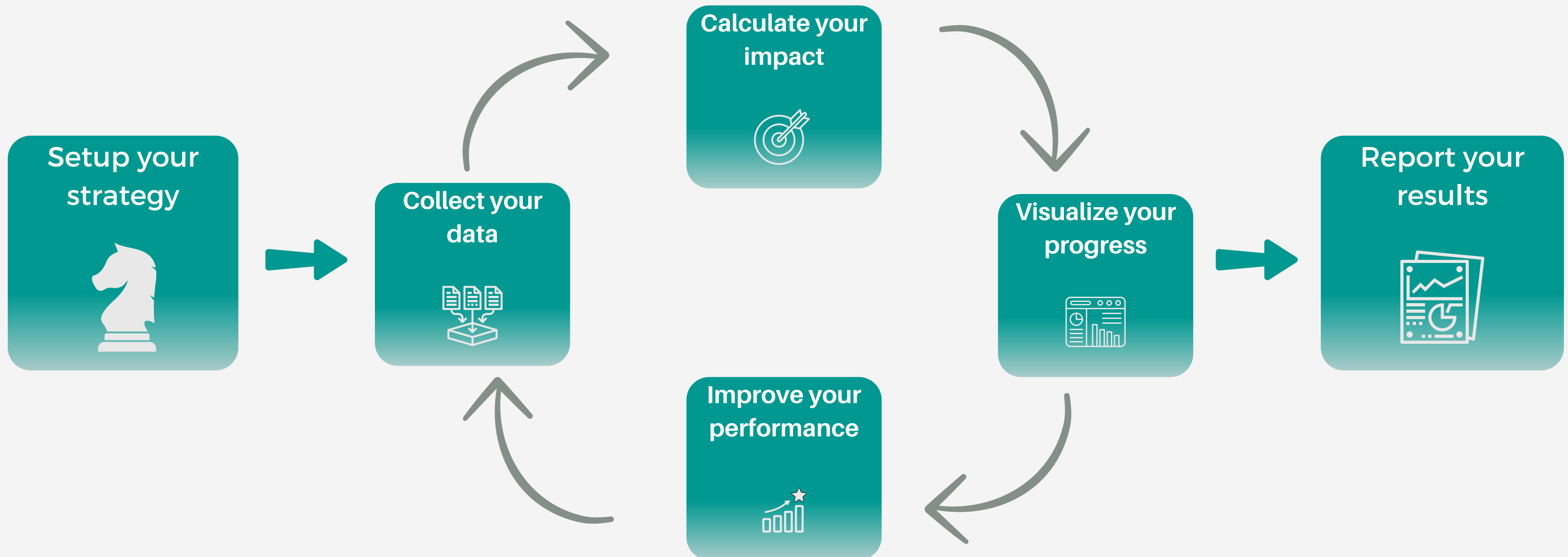


DATAPHORIA



WHAT WE DO

Strategy comes first. With technology, performance improvement is our great focus. And then disclosure, reporting and compliance is seamless.





Co-funded by
the European Union



ESG
DIAGNOSTIC

OUR TECHNOLOGY

We are constantly building cutting-edge, impact-driven tech to elevate companies that can, and will, excel in ESG performance through data.

- Integrators and ESG Data Connectors
- Personalized ESG Analytics
- ESG goals and performance tracking
- External climate data integration
- ESG data aggregation
- AI-driven insights and action plans





Co-funded by
the European Union



CASE STUDIES

A selection of corporates, startups, government partners towards impact and sustainability.



Deploying a
**Sustainability
Analytics Proof-of-
Concept** for Nestle
Hellas



Pioneering **ESG
Analytics** for a
prominent **listed
company** in the
Software Industry



Providing **nature and
wildfire analytics** for
the climate
adaptation of
Hymettus mountain



Creating the **ESG and
Impact strategy** for an
impact-driven Jewelry
tech startup



Building **ESG rating
technology**
infrastructure and
data collection for
**20k+ companies in
the UK**



Co-funded by
the European Union



ESG

DIAGNOSTIC

Embed Sustainability in your core.



DATAPHORIA

Anastasis Stamatis

anastasis@dataphoria.gr

+306983879645

Fenya Sourla

fenya@dataphoria.gr

+306974956444

omnia



- Est. 2022
- Based in Cyprus
- Certified as “Innovative SME”
- Consulting Solutions
- >25 Ongoing EU Projects

solutions



- Carbon Footprint Analysis & Resource Efficiency

- Intelligent Agriculture

- Geo-Informatics & Mapping

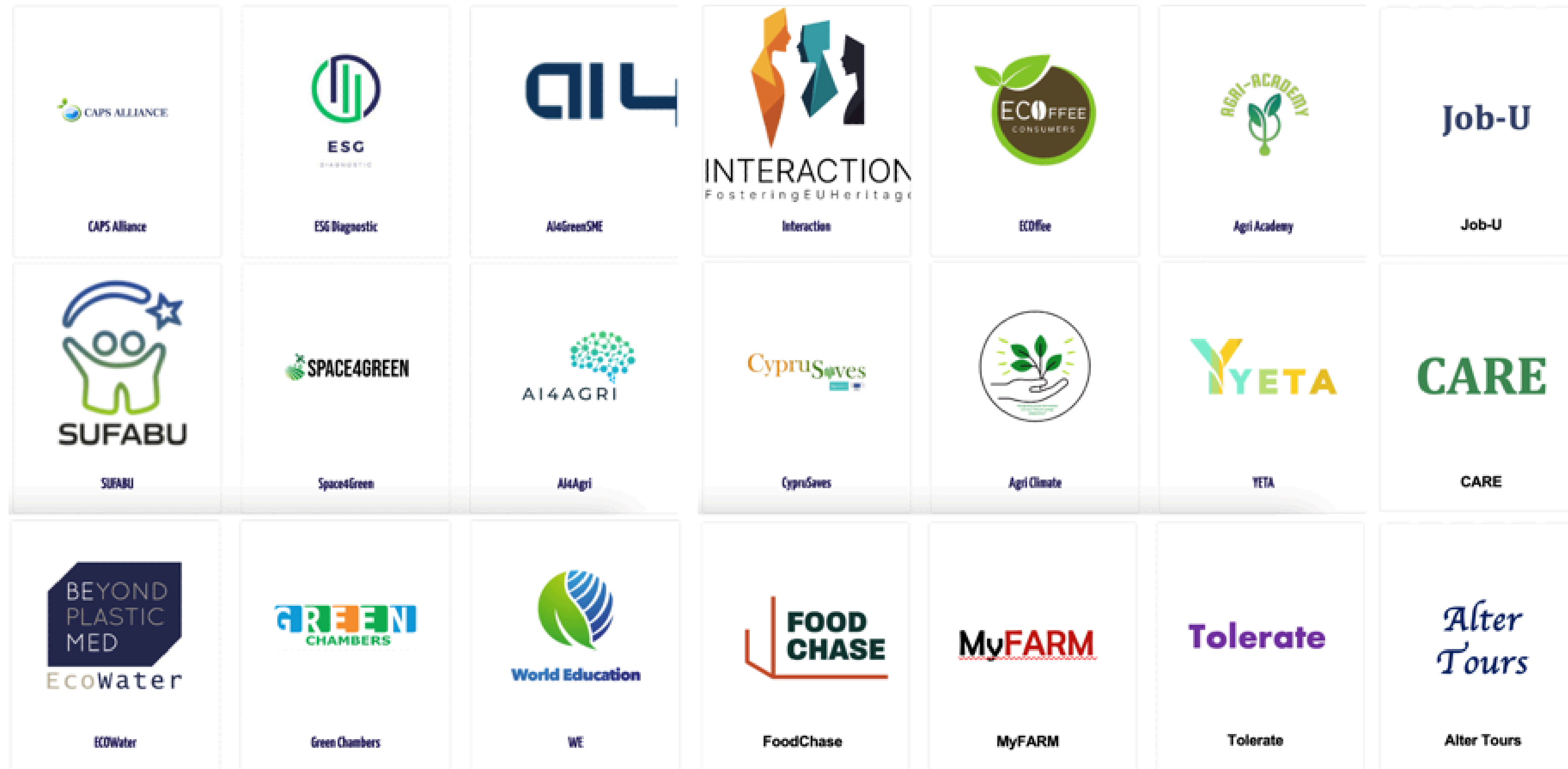


- Sustainable Mobility Planning

- Environmental Engineering

- Social & Environmental Life Cycle Assessment

few of omnia's EU projects



Thank You



www.omnia.cy



info@omnia.cy



70000109

think BIG act SMART



Co-funded by
the European Union



ESG
DIAGNOSTIC

RESULTS

ESG DIAGNOSTIC



Co-funded by
the European Union

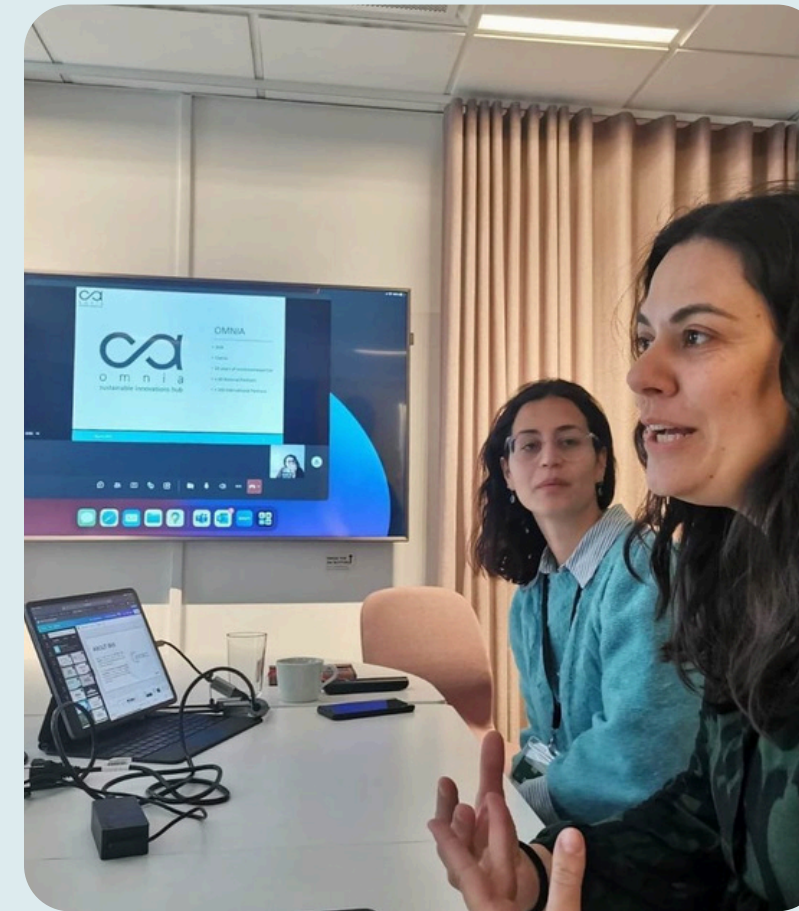
KICK-OFF MEETING



Stockholm, Sweden



04/05/2023



Leading organization: **IRIS SD**

- Two representatives per organization
- The activity established the groundwork for effective project management as the timeline and deliverables of the project were discussed thoroughly, priorities and deadlines were set.



ESG
DIAGNOSTIC

EXPERTS WORKSHOP



Nicosia, Cyprus



25/06/2023



Co-funded by
the European Union



ESG
DIAGNOSTIC

Leading organization: **OMNIA**

- Three experts per organization who:
- Examined the present status, recognized the target group's learning goals, the program's workable steps that can be taken to achieve the best possible training material;
- Discussed for the best related real life practices, which will were included in the training guide book and specified the study visits that took place in Greece during the Activity 4;
- Covered a broad spectrum of needs, i.e. data analysis, digitalisation, reporting, presentation, infographics, solution development and implementation as well as ongoing assessment of the ESG strategy.

Focus Group Report including Best Practises Portfolio

- The consortium conducted a thorough desk-based research to find and collect **9 ESG Challenges and Solutions** resulting from the ESG sustainability practices of the cooperating countries, and then grouped them into a portfolio.

As a result:

- The creation of a good practices portfolio, which contains the practices gathered during the desk research;
- A ready-to-use research tool that various stakeholders can customize for their individual research requirements pertaining to the project's issue.

① Intellectual Output



Transnational Workshop for Professionals



Athens, Greece



09/12/2023



Co-funded by
the European Union



Leading organization: **DATAPHORIA**

- Three professionals were sent by organization

Participants:

- gained the appropriate knowledge and experience to recognize the critical KPIs to be monitored during ESG and sustainability assessment;
- familiarised themselves with digital tools that help them automate and accelerate the sustainability transition of their organisation;
- learnt how to use digital solutions and implement best practices.



ESG

DIAGNOSTIC

ESG e-guide handbook

It is dedicated to provide in-depth knowledge and practical guidance on the concept of Environmental, Social, and Governance (ESG) practices.

It includes training material to explore the ESG frameworks and digital tools a company can use, including the following sections:

- Introduction
- Assessment
- Strategy
- Implementation
- Reporting
- Conclusion

② Intellectual Output



Project Results Resources

1

Website

<https://www.esgdiagnostic.eu/>

2

Facebook

<https://www.facebook.com/profile.php?id=100092214740736>

3

Instagram

https://www.instagram.com/esg_diagnostic/





Thank You

For your attention

***Please take some time to fill in the evaluation form:**

<https://forms.gle/HQVQJivjqpHY8Zr5A>



Co-funded by
the European Union